



### Safety

To ensure employee safety, we are revising our safety management system and promoting safety and health activities.

## Work-related Safety and Health Initiatives

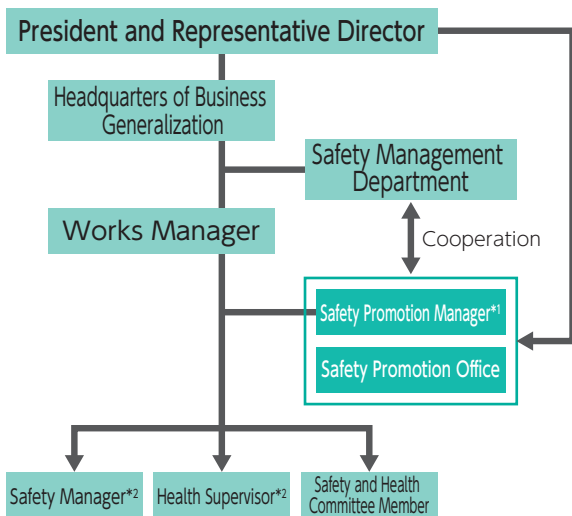
Daiseiki strives to create a safe working environment through efforts to prevent work-related accidents and ensure the physical and mental health of all employees.

### Establishment of Safety and Health Management System

Each Daiseiki Group company appoints its President as the chief representative, and selects representatives for Safety and Health at each site to build the Safety and Health Management System.

Also, we share information of accidents at the Daiseiki Group to prevent similar accidents.

#### Daiseiki's Safety and Health Management System



\*1 Delegated to authorities related to safety management by President and Representative Director

\*2 At the Chiba Works, which has less than 50 employees, it is not necessary to appoint a Safety and Health Manager, thus a Safety and Health Promoter has been appointed

### Safety Promotion Manager Appointment

“Safety Promotion Office” have been established at each Daiseiki business site managed by “Safety Promotion Manager” appointed to promote safety. The president delegates the authority to promote safety to a person in charge at each worksite who provides guidance to staff and implements various safety measures.

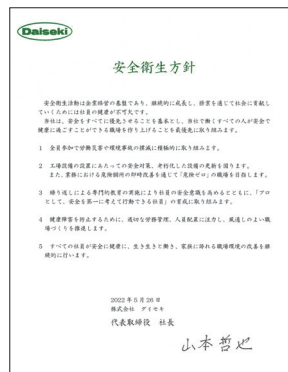
### Initiatives aimed at danger-free workplaces

To prevent accidents, Daiseiki Group sites that handle hazardous materials implement the following initiatives.

- 1 Close-call incident reporting and risk assessments**  
We operate a close-call reporting system which receives reports from employees on things they feel could pose a danger, and contributes to improvements. Furthermore, managers regularly conduct risk assessments to quantitatively evaluate the frequency and severity of work-related hazards and take risk mitigation measures.
- 2 Sharing accident information**  
Information on accidents which occurred at a Group company is shared internally at that company and used for guidance to prevent the same type of accident from occurring in the future. Information on accidents of particular concern is also shared with other Group companies.
- 3 Safety Patrol**  
Safety patrols are periodically conducted at each workplace and hazardous work/locations are identified for improvement.

### Safety and Health Policy

The Daiseiki Group establishes Safety and Health Policy at each company and promotes prevention of accidents, and Safety and Health. We put safety as the top priority and work on creating the workplace where employees can work safely and healthy.



Safety and Health Policy (Daiseiki)



A snapshot of crane operation (System Kikou)

## Safety Trainings

To prevent accidents, the Daiseki Group gives daily instructions and alerts at monthly safety meetings for the sites that handle hazardous materials. In addition, safety training is conducted for all employees. For example, Danger Prediction Training is conducted to enhance workers' ability to recognize possible hazards at worksites. We also conduct side-by-side instructional rides for vehicle crews to check and evaluate the state of vehicle driving and operations.

Employees who attended safety training said that the training helped them understand the awfulness of accidents and points to focus on to prevent accidents.



Side-by-side instructional ride with vehicle crew (Daiseki Kyushu Works)

## Safety trainings for partner companies

Daiseki focuses not only on safety training for Daiseki employees, but also on safety training to prevent accidents at partner companies. Since about half of the crews that go to customer plants to collect waste are crews from partner companies, we recognize that accident prevention for partner companies is a key topic. At Daiseki's Kansai Works, partner company crews are instructed on examples of accidents that occurred at other companies and countermeasures, as well as how to handle equipment, response measures in emergencies, and other topics.



Safety training for partner company crews (Daiseki Kansai Works)

## Daiseki Group Work-related Accident Record

In 2022, the Daiseki Group had 4 accidents accompanied by lost worktime and 13 accidents not accompanied by lost worktime. Accidents associated with lost worktime included lacerations and falls, and accidents not associated with lost worktime included touching wastewater and lacerations.

### Daiseki Group Work-related Accidents (cases)

Year	January-December 2018	January-December 2019	January-December 2020	January-December 2021	January-December 2022
Fatalities	0	0	0	0	0
Accidents accompanied by lost worktime	7	7	7	6	4
Accidents not accompanied by lost worktime	10	5	2	7	13

### Daiseki Group occupational accidents (frequency rate)\*

Year	January-December 2020	January-December 2021	January-December 2022
Manufacturing industry	1.21	1.31	1.25
Industrial waste treatment industry	6.95	7.36	6.52
Daiseki Group	2.68	2.21	1.42

\* Frequency rate: Total number of casualties due to occupational accidents per million total working hours (accident frequency)

### Daiseki Group Occupational accident rate (intensity)\*

Year	January-December 2020	January-December 2021	January-December 2022
Manufacturing industry	0.07	0.06	0.08
Industrial waste treatment industry	0.48	0.17	0.51
Daiseki Group	0.05	0.04	0.06

\* Intensity: Total number of working days lost per 1,000 total actual working hours (degree of accident severity)

## Giving a Talk on Our Actions for Safety

In July 2023, Daiseki was invited to the Safety Conference organized by the Hiroshima Prefecture Resource Circulation Association. We gave a talk to the Conference about our safety initiatives for the prevention of accidents in the industrial waste treatment industry, and also gave an overview of our Hiroshima Works, Daiseki's 7th works.



A snapshot of our talk (Daiseki Vice President Ito)